

The ClickFit Mounting Structure for PV Systems

The ClickFit mounting system is designed after years of experience with traditional available mounting systems. We were able to simplify and optimize it making the mounting of PV systems easier and faster.

While working on rooftops is dangerous and difficult because of the range of tools needed, this system provides you ease and comfort because less components and tools are needed. It also reduces the installation time considerably, up to 40%!

Our secret is the patented 'click' joint between the hook and the support rail. No special tools nor hardware is needed for fastening the mounting structure.



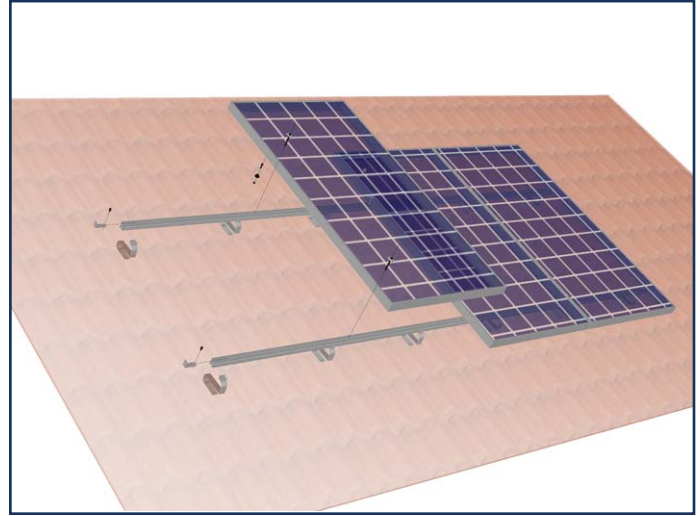
What makes ClickFit unique

- Fast installation, up to 40% faster than any other available mounting structures
- The patented hooks can be installed without the use of tools or hardware
- The support rail is mounted on the hooks by a patented "click" joint, without use of any tools or hardware
- The nylon sleeve is a nice trick to temporarily fixate the solar modules, so both hands are free, when securing the modules on the rail with stainless steel screws
- All system components are made from high-quality materials using only stainless steel and aluminium
- 20 years product warranty
- TÜV Rheinland Certified

The ClickFit Systems

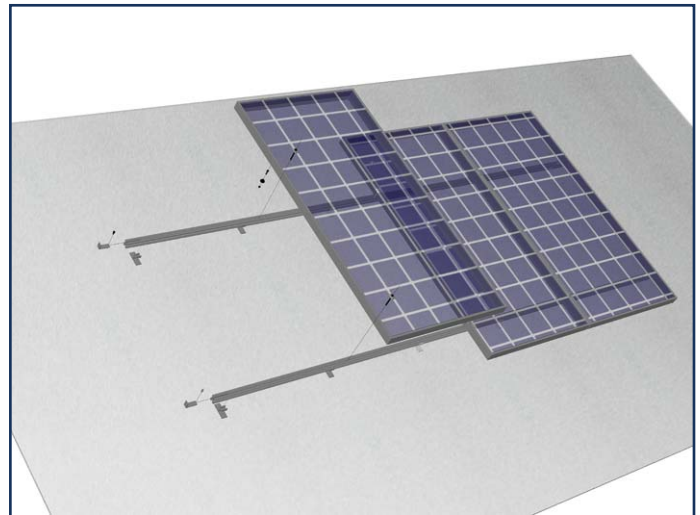
Sloped roofs with roof tiles

ClickFit uses special patented hooks and rails for building a solid mounting structure. This system can be mounted on the roof without the use of any tools or hardware. This speeds up the installation (up to 40% compared to other available systems) and makes the job safer for the installers/roofers. These advantages reduce the costs of the installation drastically. By using two types of roof hooks (Standaard and wide) ClickFit can be used on every sloped roof no matter what size or shape the battens or roof tiles may have.



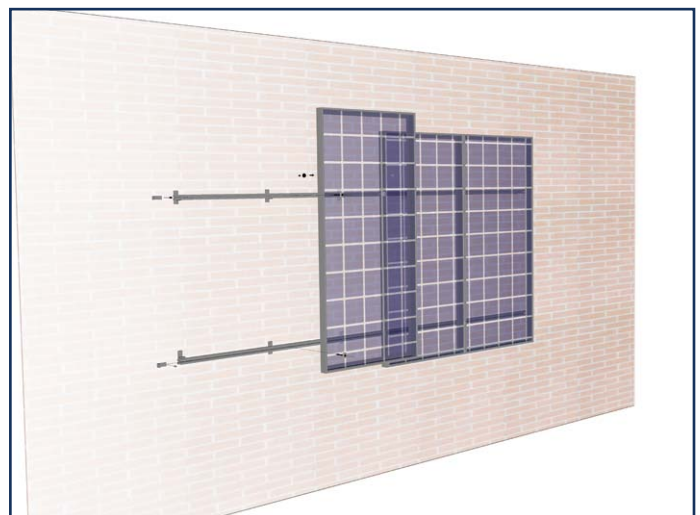
Sloped roofs with bitumen or metal roofing panels, or corrugated sheeting.

The ClickFit system for sloped-bitumen-roofs is basically the same as the system for roof tiles. The only difference here is that the patented hooks are replaced by special supports with the same unique "click" joint as the hooks. To make the roof weather and waterproof Shell Tixophalte kit can be used underneath the supports.



Facades

The ClickFit system for façades is also basically the same as the system for roof tiles. The only difference here is that the patented hooks are replaced by special supports with the same unique "click" joint as the hooks. By using these patented supports the solar modules can easily be mounted parallel to the façade.



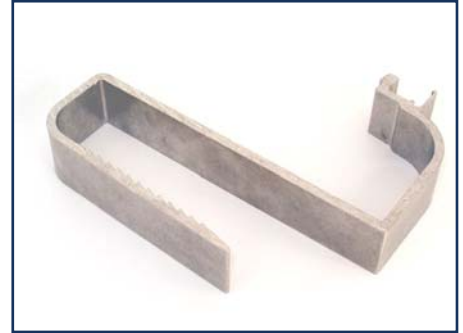
The main ClickFit Components

Roof hook

The patented roof hook is made of aluminium. The hook can be mounted without the use of tools or hardware. By using two types of roof hooks ClickFit can be used on every tiled roof no matter what shape, size or thickness the batons or roof tiles may have. The hook is designed with a "click" joint on which the support rail can be snapped.

The ClickFit roof hooks have a specific "thickness range". (Tile plus batten)
For the "standard" roof hook this is from 30mm to 44mm.

For the "wide" roof hook this is from 45 to 63mm.



Support rail

The support rail is made of aluminium. The patented design has a "click" joint on one side of the rail for snapping onto the hooks. The other side of the support rail has a profile for mounting the solar modules or laminates.



Support with "click" joint

The support with "click" joint is made of aluminium and has the same patented "click" joint as the roof hook. With this support the ClickFit system can be used on sloped bitumen, roof slates, corrugated sheeting, trapezoidal sheeting, façades and in other applications.



Assembly set

The assembly set is used for fixing solar modules on the support rail. The set is made of two aluminium clamps and stainless steel screws. The advantage of this system is the simple fixing of the modules from above without the use of sliding nuts.



ClickFit Examples

Sloped roofs with roof tiles



Sloped roofs with bitumen



Facades



Calzip roofs



ClickFit Mounting Structures for PV systems

More information:
www.click-fit.com

or send an email to:
info@click-fit.com

Your ClickFit supplier